



THE RECYCLING RECEPTACLE LINE

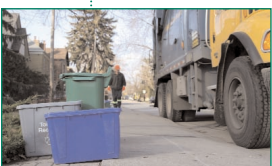
Products that help preserve our environment!



Outdoor Receptacles
Indoor Receptacles
Curbside Bins
Tilt Trucks & Dollies

A COMPLETE LINE OF PRODUCTS TO FIT EVERY APPLICATION IN EVERY FACILITY

Exceeds the Environmental Protection Agency's (EPA) guidelines
Innovative designs promote a comprehensive recycling program
Seamless construction ensures long-lasting durability



DEFINING GREEN

The definition is derived from Presidential Executive Order 13423: Green (or environmentally preferable) is defined as “products and services that reduce the health and environmental impacts compared to similar products and services used for the same purpose.” Simply stated, it’s all about selecting and using cleaning practices and products that protect building occupant’s and cleaning personnel’s health without harming the environment.

WHAT ROLE DOES THE EPA PLAY IN SETTING INDUSTRY STANDARDS?

The Environmental Protection Agency’s mission is to protect human health and to safeguard the natural environment ~ air, water and land. They are responsible for researching and setting national standards for a variety of environmental programs. The Comprehensive Procurement Guideline (CPG) program is part of EPA’s continuing effort to promote the use of materials recovered from solid waste. Buying recycled-content products ensures that the materials collected in recycling programs will be used again in the manufacture of new products. The EPA’s Guidelines for post-consumer recycled content has been adopted by industry as the standard which must be met and applies to receptacles manufactured for the purpose of recycling.

WHAT IS RECYCLING AND WHY DO IT?

The EPA adopted the National Recycling Coalition’s definition of recycling: “the series of activities by which materials that are no longer useful to the generator are collected, sorted, processed and converted into raw materials and used in the production of new products.”

WHAT IS POST-CONSUMER RECYCLED CONTENT?

Post-consumer content or waste is defined as any product which has served its intended use by a business or a consumer, which has been disposed and subsequently separated from solid waste for use as a constituent in a new product. The EPA, through their Comprehensive Procurement Guideline program, has set the minimal standard for the amount of postconsumer recycled content in recycling receptacles at 20%.

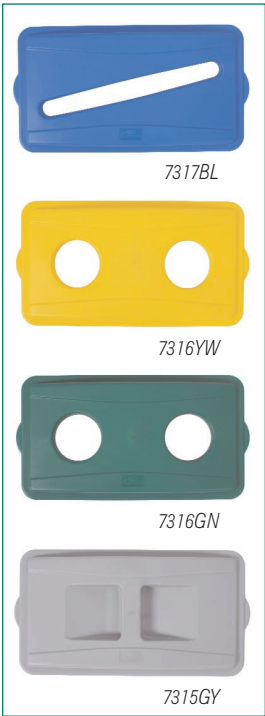
WHO SHOULD ADOPT A COMPREHENSIVE RECYCLING PROGRAM?

Launching a comprehensive recycling program is not only a logical first step in “Going Green”, but it is a program that absolutely every organization can and should adopt as part of their overall sustainability vision. Stewardship of the environment is everyone’s responsibility and the benefits are many:

- Conserves natural resources such as timber, water and minerals
- Reduces the reliance on landfills and incinerators
- Reduces greenhouse gas emissions and helps stem the dangers of global climate change
- Energy savings from the processing of recycled materials versus virgin materials which require extraction, refinement and transportation
- Helping to sustain the environment for future generations

WHY CHOOSE CONTINENTAL®?

Continental® has a wide variety of recycling receptacle products that promote and enhance a comprehensive recycling program - for all types of recyclable materials and facilities. You can be assured that our recycle receptacles meet or exceed the EPA’s Comprehensive Procurement Guidelines and that the quality of construction ensures long-lasting durability. Additionally, many of our innovation designs are sleek, attractive and highly functional, encouraging users to support the recycling program launched by your organization.

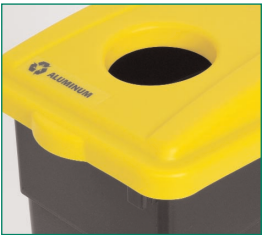


7317BL

7316YW

7316GN

7315GY



Wall Hugger™ Recycle Lids come with trilingual (Eng/Sp/Fr) "Recycle Material ID Labels" to make sorting easy!



Optional 8320 Single Wall Hugger™ Dolly

Optional 8320-4 Quad-Collection Wall Hugger™ Dolly



8322 and H8322 (23 gallon) Wall Hugger™ receptacles are available in black, blue and green. H8316 and 8316 (16 gallon) Wall Hugger™ receptacles are available in black.

The Wall Hugger™ line has an updated design which is sleek and attractive. It has also been expanded to include a 16 gallon size which, like the 23 gallon version, protrudes less than one foot from the wall! These space saving recyclers can be matched to any of our new style Wall Hugger™ Recycle Lids. These color-coded lids make identification easier, which encourages users to sort their recyclables. Add our new Quad-Collection Dolly and you have a complete recycling station to neatly and efficiently sort and transport recycled materials!

| Brand | Item Number | Item | Color | Pack Case | Case Weight | Case Cube | Post-Consumer Recycled Resin |
|-------|-------------|------------------------------------|----------|-----------|-------------|-----------|------------------------------|
| CMC | 8322BK | 23 gal. Wall Hugger™ | ● Black | 4 | 27.10 lbs. | 6.200 | |
| CMC | 8322-2 | 23 gal. Wall Hugger™ | ● Green | 4 | 27.10 lbs. | 6.200 | X |
| CMC | 8322-1 | 23 gal. Wall Hugger™ | ● Blue | 4 | 27.10 lbs. | 6.200 | X |
| CMC | 8316BK | 16 gal. Wall Hugger™ | ● Black | 4 | 22.50 lbs. | 5.050 | |
| CMC | H8322BK | 23 gal. Wall Hugger™ w/handles | ● Black | 4 | 27.75 lbs. | 7.150 | |
| CMC | H8322-2 | 23 gal. Wall Hugger™ w/handles | ● Green | 4 | 27.75 lbs. | 7.150 | X |
| CMC | H8322-1 | 23 gal. Wall Hugger™ w/handles | ● Blue | 4 | 27.10 lbs. | 7.150 | X |
| CMC | H8316BK | 16 gal. Wall Hugger™ w/handles | ● Black | 4 | 23.20 lbs. | 5.680 | |
| CMC | 7315GY | Recycle Lid w/handles | ● Grey | 4 | 4.00 lbs. | 1.000 | |
| CMC | 7316GN | Recycle Lid w/holes | ● Green | 4 | 4.00 lbs. | 1.000 | |
| CMC | 7316YW | Recycle Lid w/holes | ● Yellow | 4 | 4.00 lbs. | 1.000 | |
| CMC | 7317BL | Recycle Lid w/slot | ● Blue | 4 | 4.00 lbs. | 1.000 | |
| CMC | 8321-1 | 21 gal. Half Round Wall Hugger™ | ● Blue | 4 | 27.10 lbs. | 6.200 | X |
| CMC | 8319 | Wall Hugger™ Mounting Bracket | --- | 4 | 3.64 lbs. | 0.040 | |
| CMC | 8320 | Single Wall Hugger™ Dolly | ● Black | 2 | 17.00 lbs. | 1.650 | |
| CMC | 8320-4 | Quad-Collection Wall Hugger™ Dolly | ● Black | 1 | 18.00 lbs. | 3.525 | |



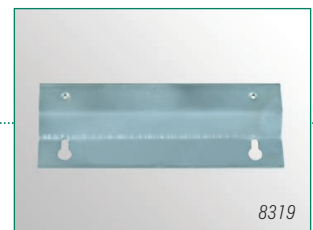
The expanded line of Wall Hugger™ Receptacles now includes a version with molded-in handles for ease of transport.



Molded-in Bag Cinch eliminates the need to tie knots in the poly liner to keep it secure around the receptacle rim!

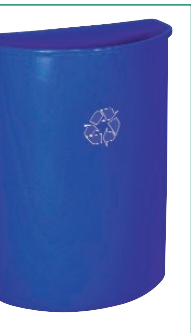


Molded-in hand grips in the receptacle base provide a secure area to grasp when lifting and dumping.



8319

The Mounting Bracket can attach any Wall Hugger™ Receptacle to the wall, suspending it above the floor.



8321-1 (21 gallon) Half Round Wall Hugger™ receptacles have a smaller footprint, perfect for today's space efficient workplace. Available in blue.



Optional
8325-D Recycle'Round™ Dolly



Corner'Round™ Recycle Receptacles come with a unique 'Key-Way' feature and shoulder design that allows a poly liner to be secured and helps to hide the unsightly bag "skirt" to maintain a clean, professional appearance. Trilingual (Eng/Sp/Fr) "Recycle Material ID Labels" are also included to make sorting easy!

Combine the new Recycle'Round™ Dolly and the new color-coded Corner'Round™ Receptacles to create a unique recycling collection system that promotes a comprehensive recycling program. Products are sold separately - mix and match to customize a recycling program for any application! Recycle'Round™ Station is ideal for open settings like school cafeterias, atriums, foyers, food courts, airport terminals, plazas, convention centers, etc.

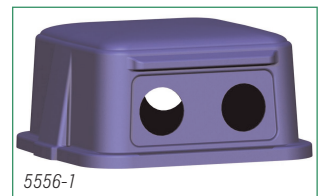
| Brand | Item Number | Item | Color | Pack Case | Case Weight | Case Cube | Post-Consumer Recycled Resin |
|-------|---------------|----------------------------------|-------------|-----------|-------------|-----------|------------------------------|
| CMC | 8325-1 | 21 gal. Corner'Round™ w/dome | ● Blue | 1 | 14.00 lbs. | 4.810 | X |
| CMC | 8325-2 | 21 gal. Corner'Round™ w/dome | ● Green | 1 | 14.00 lbs. | 4.810 | X |
| | | | ● Yellow | | | | |
| CMC | 8325-3 | 21 gal. Corner'Round™ w/dome | ● Yellow | 1 | 14.00 lbs. | 4.810 | |
| CMC | 8325-4 | 21 gal. Corner'Round™ w/dome | ● Grey | 1 | 14.00 lbs. | 4.810 | |
| CMC | 8325-D | Recycle'Round™ Dolly | ● Black | 1 | 21.30 lbs. | 5.160 | |
| CMC | 656-1 | Recycling Station w/YW & GY lids | ● Blue base | 1 | 42.00 lbs. | 16.529 | X |
| CMC | 656-2 | Recycling Station w/GN & BL lids | Blue base | 1 | 42.00 lbs. | 16.529 | X |

The newest addition to the recycle line is the Colossus® Recycle Station. These high capacity recycle stations utilize color-coded, hinged recycle lids to promote and encourage users to sort their recyclables! Trilingual Material ID Labels (included) makes sorting recyclables easy and allows the user to customize a program to their facility. Two 23 gallon rigid plastic liners allow for convenient and efficient separation of recyclables for multi-stream collection. Rigid liners are easily removed for cleaning and emptying.



656-1

656-2



Continental® offers a wide array of recycling receptacles. All are molded of engineered resins with seamless construction, ensuring long-lasting durability. Our Huskee™ Round recycling receptacles are available in 20, 32 and 44 gallon sizes. The Huskee™ Square is available in two sizes; 48 gallon (with handles) and 56 gallon (without handles). The Swingline™ recycling receptacle provides 25% more capacity than round containers of the same height - it comes in 25, 32 and 50 gallon sizes. Our recycling Commercial Wastebaskets come in three sizes; 13 5/8 qt., 28 1/8 qt. and 41 1/8 qt.

Dome Lid accepts bottles or cans - fits the 5555-1

| Brand | Item Number | Item | Color | Pack Case | Case Weight | Case Cube | Post-Consumer Recycled Resin |
|-------|----------------|------------------------------------|---------|-----------|-------------|-----------|------------------------------|
| CMC | 1358-1 | 13 5/8 qt. Receptacle | ● Blue | 12 | 15.00 lbs. | 1.680 | X |
| CMC | 2818-1 | 28 1/8 qt. Receptacle | ● Blue | 12 | 27.00 lbs. | 3.240 | X |
| CMC | 4114-1 | 41 1/8 qt. Receptacle | ● Blue | 12 | 35.16 lbs. | 3.480 | X |
| CMC | 2000-1 | 20 gal. Huskee™ Round Receptacle | ● Blue | 6 | 38.76 lbs. | 10.920 | X |
| CMC | 3200-1 | 32 gal. Huskee™ Round Receptacle | ● Blue | 6 | 56.60 lbs. | 16.620 | X |
| CMC | 4444-1 | 44 gal. Huskee™ Round Receptacle | ● Blue | 4 | 50.48 lbs. | 21.040 | X |
| CMC | 3201-1 | Lid w/hole & imprint - fits 3200-1 | ○ White | 6 | 13.80 lbs. | 3.420 | |
| CMC | 4000-1 | 48 gal. Square Huskee™ | ● Blue | 4 | 59.12 lbs. | 20.040 | X |
| CMC | 5555-1 | 55 gal. Square Huskee™ | ● Blue | 4 | 73.56 lbs. | 25.640 | X |
| CMC | 5556-1 | Dome lid w/holes - fits 5555-1 | ● Blue | 0 | 13.30 lbs. | 5.900 | X |
| CMC | 25-1 | 25 gal. Swingline™ | ● Blue | 4 | 33.80 lbs. | 8.440 | X |
| CMC | 32-1 | 32 gal. Swingline™ | ● Blue | 4 | 35.00 lbs. | 9.280 | X |
| CMC | T1700WH | Swingline™ lid fits 25-1 & 32-1 | ○ White | 4 | 11.80 lbs. | 2.240 | |
| CMC | 1725-1 | Lid w/slot fits 25-1 & 32-1 | ● Blue | 0 | 7.50 lbs. | 2.915 | X |
| CMC | 1725-2 | Lid w/hole fits 25-1 & 32-1 | ● Blue | 0 | 7.50 lbs. | 2.915 | X |
| CMC | 50-1 | 50 gal. Swingline™ | ● Blue | 0 | 64.00 lbs. | 13.770 | X |
| CMC | 1750-1 | Lid w/slot fits 25-1 & 32-1 | ● Blue | 0 | 7.70 lbs. | 2.679 | X |
| CMC | 1750-2 | Lid w/hole fits 25-1 & 32-1 | ● Blue | 0 | 7.70 lbs. | 2.679 | X |



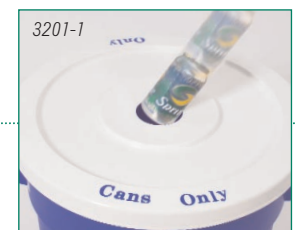
Tip Top Lid uses gravity to create a hands-free opening. Automatically closes to conceal trash. Fits 25 and 32 gallon Swingline™ receptacles.



Lid has slot for paper. Fits 25 and 32 gallon Swingline™ receptacles. 1750-1 fits 50 gallon receptacle.



Lid has hole for bottles or cans. Fits 25 and 32 gallon Swingline™ receptacles. 1750-2 fits 50 gallon receptacle.



Recycle Lid has a center hole and permanent "Cans Only" imprint to encourage use.



5840-1

One-piece, extra-strong, seamless, industrial plastic construction. Inset wheel placement prevents wall/door damage and allows for nesting in shipping and storage. Fits through standard office doorways.



5850-1

50 gallon capacity receptacle features a hinged, double-walled lid and 8", non-marking wheels.



5916-1

This 16 Cubic foot Cube Truck features 3" casters placed in a diamond configuration. Two stationary and two fixed casters allow this unit to be turned on its own axis for greater mobility. Ideal for bulk recycle collection.



5914-1
MFT-5BK

Our Curbside Bin is durable and lightweight. Drain holes in base of bin prevent accumulation of rainwater. Notched sides allow units to be cross-stacked. For convenient indoor recycle collection, one or two Curbside Bins can be used with the MFT-5BK Trolley.

| Brand | Item Number | Item | Color | Pack Case | Case Weight | Case Cube | Post-Consumer Recycled Resin |
|-------|----------------|----------------------------------|---------|-----------|-------------|-----------|------------------------------|
| CMC | 5840-1 | 3/8 Cubic Yard Tilt Truck | ● Blue | 1 | 79.00 lbs. | 43.110 | X |
| CMC | 5850-1 | 50 gal. Tilt-N-Wheel™ Receptacle | ● Blue | 1 | 56.00 lbs. | 18.540 | X |
| CMC | 5916-1 | 16 Cubic Foot. Cube Truck | ● Blue | 1 | 50.00 lbs. | 25.460 | X |
| CMC | 5914-1 | 14 gal. Curbside Recycle Bin | ● Blue | 12 | 47.40 lbs. | 6.600 | X |
| CMC | MFT-5BK | Trolley 31 3/4" x 23" x 38 1/2" | ● Black | 1 | 13.80 lbs. | 2.270 | |

